



SONY En-Effio-E Wide Dynamic

IR Dome Color Camera



CCTV Surveillance

NEW 2012 SEP V1.0



VCS-9532SHD

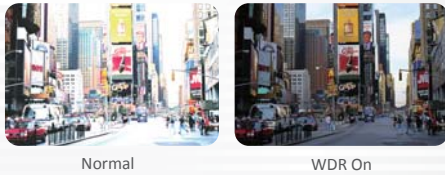
- 1/3" Digital Wide Dynamic Color Camera
- Resolution: 700TVL
- Smart IR
- Anti-Headlight (HLC)
- 2D Noise Reduction
- Mosaic Privacy Mask(8 Zones Programmable, Mosaic)
- Ideal for Backlight Environments(BLC)
- High Contrast Images
- Picture Quality Adjustable (Contrast/Sharpness/Hue/Gain)
- IR Cut Filter, Accurate Color Performance
- Vandal-Resistant case design

VCS-9532SHD SONY En-Effio-E Wide Dynamic IR Dome Color Camera

• Smart IR



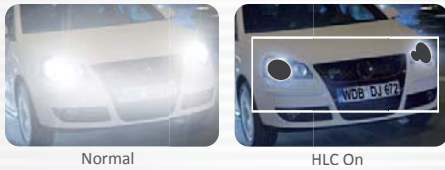
• WDR



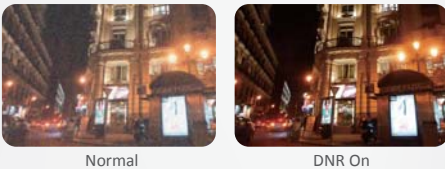
• BLC



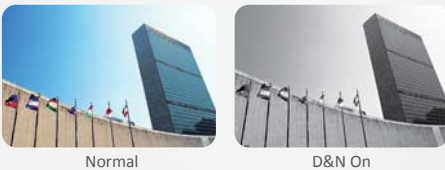
• HLC



• DNR



• D&N

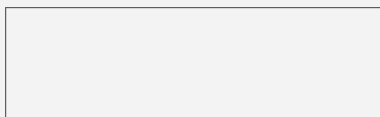


SPECIFICATIONS

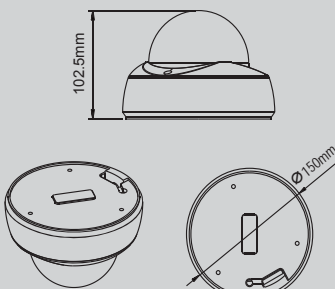
Video System	NTSC	PAL
Pick Up Element	1/3 Inch 960h CCD Image Sensor	
Image Signal Process	Digital Signal Processing System	
Lens Mount	2.8 mm ~ 12 mm (Vari-Focal) Auto Iris IR Lens	
Number of Pixel	1020 (H) × 508 (V)	1024 (H) × 596 (V)
Picture Elements	Approximately 520K	Approximately 610K
Horizontal Resolution	700TVL	
Power Supply	DC12V ± 1V	
Mechanical IR Cut Filter	Automatically Switches (IR Board Control)	
Synchronization	Internal	
Scanning System	2 : 1 Interlace	
Sensitivity	0 LUX (IR On)	
Minimum Illumination	Color:0.03LUX	
S/N Ratio	Max.52 dB(AGC off, Weight on)	
Menu	Build In OSD Control	
Title	Title	
Wide Dynamic Range (WDR)	ATR Digital Wd	
Back Light Compensation (BLC)	HLC / BLC / Off	
Automatic Gain Control (AGC)	On / Off (4 Steps)	
Dynamic Noise Reduction(DNR)	2D-NR	
Day & Night Mode (D&N)	Color / B&W / AUTO	
Motion Detection	ON / OFF (24x16 Zones)	
Flicker Less	On / Off	
Privacy Mask	On / Off (8 Zones Programmable, Mosaic)	
Auto White Balance	ATW / Push / User1 / User2 / Anti CR / Manual / Push Lock (1800K to 10500K)	
Electronic Shutter	Auto: 1/60 S To 1/100,000 S	Auto: 1/50 S To 1/100,000 S
Analog Output	1 Vp-P Composite Video Output, 75 Ohms	
LEDs	30 PCS	
IR Range	25 m	
Wavelength	850 nm	
Operating Temperature	-5° C ~ +40° C	
Dimensions (W × D × H)	Φ150 mm ×102.5 mm	
Weight	About 970 g	

★Product specifications are subject to change without notice; please contact us for the latest information.

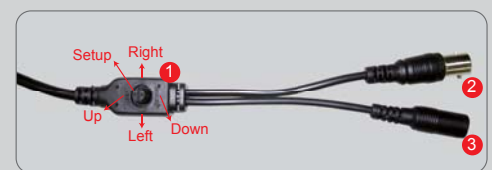
■ DISTRIBUTED BY



■ Dimension



■ OSD Connector



1. OSD Knob
2. Video Out
3. DC12V